

PLEASE CHECK WWW.MOLEX.COM FOR LATEST PART INFORMATION

Part Number: [0039299167](#)
Status: **Active**
Overview: [minifit_jr](#)
Description: 4.20mm (.165") Pitch Mini-Fit Jr.™ Header, Dual Row, Vertical, with Snap-in Plastic Peg PCB Lock, 16 Circuits, PA Polyamide Nylon 6/6 94V-0, Tin (Sn) Plating, without Drain Holes

Documents:

[3D Model](#) [Product Specification PS-5556-001 \(PDF\)](#)
[Drawing \(PDF\)](#) [RoHS Certificate of Compliance \(PDF\)](#)

Agency Certification

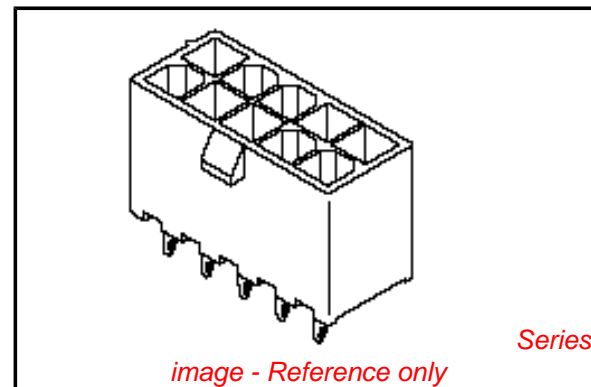
| | |
|-----|-----------|
| CSA | LR19980 |
| TUV | R72081037 |
| UL | E29179 |

General

| | |
|----------------|--|
| Product Family | PCB Headers |
| Series | 5566 |
| Application | Wire-to-Board |
| Comments | Current = 13A max. per circuit when header is mated to a receptacle loaded with 45750 Mini-Fit Plus HCS™ Crimp Terminal Crimped to to 16 AWG wire. . See Molex product specification PS-45750-001 for additional current de-rating information.. High Temperature, Square Pin, Solder Type |
| Overview | minifit_jr |
| Product Name | Mini-Fit Jr.™ |

Physical

| | |
|--------------------------------|----------|
| Breakaway | No |
| Circuits (Loaded) | 16 |
| Circuits (maximum) | 16 |
| Color - Resin | Natural |
| Durability (mating cycles max) | 30 |
| First Mate / Last Break | No |
| Flammability | 94V-0 |
| Glow-Wire Compliant | No |
| Guide to Mating Part | No |
| Keying to Mating Part | None |
| Lock to Mating Part | Yes |
| Material - Metal | Brass |
| Material - Plating Mating | Tin |
| Material - Plating Termination | Tin |
| Material - Resin | Nylon |
| Number of Rows | 2 |
| Orientation | Vertical |
| PC Tail Length (in) | 0.138 In |
| PC Tail Length (mm) | 3.50 mm |
| PCB Locator | Yes |
| PCB Retention | Yes |
| PCB Thickness Recommended (in) | 0.062 In |
| PCB Thickness Recommended (mm) | 1.60 mm |
| Packaging Type | Tray |
| Pitch - Mating Interface (in) | 0.165 In |
| Pitch - Mating Interface (mm) | 4.20 mm |



EU RoHS

ELV and RoHS Compliant
REACH SVHC
 Not Reviewed
Halogen-Free Status
Not Reviewed

China RoHS



Need more information on product environmental compliance?

Email productcompliance@molex.com
 For a multiple part number RoHS Certificate of Compliance, [click here](#)

Please visit the [Contact Us](#) section for any non-product compliance questions.

Search Parts in this Series

[5566Series](#)

Mates With

[5557](#) Mini-Fit Jr.™ Receptacle Housing

| | |
|--------------------------------|-----------------|
| Pitch - Term. Interface (in) | 0.165 In |
| Pitch - Term. Interface (mm) | 4.20 mm |
| Plating min: Mating (µin) | 35 |
| Plating min: Mating (µm) | 0.90 |
| Plating min: Termination (µin) | 100 |
| Plating min: Termination (µm) | 2.50 |
| Polarized to Mating Part | Yes |
| Polarized to PCB | Yes |
| Shrouded | Fully |
| Stackable | No |
| Surface Mount Compatible (SMC) | No |
| Temperature Range - Operating | -40°C to +105°C |
| Termination Interface: Style | Through Hole |

Electrical

| | |
|-------------------------------|------|
| Current - Maximum per Contact | 13A |
| Voltage - Maximum | 600V |

Solder Process Data

| | |
|--|------------------------|
| Duration at Max. Process Temperature (seconds) | 5 |
| Lead-free Process Capability | Wave Capable (TH only) |
| Max. Cycles at Max. Process Temperature | 1 |
| Process Temperature max. C | 240 |

Material Info

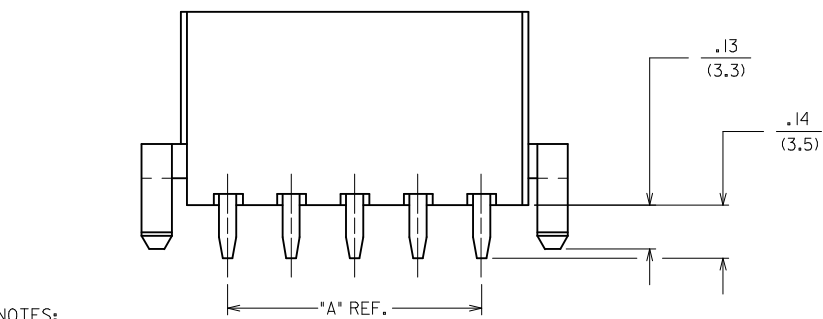
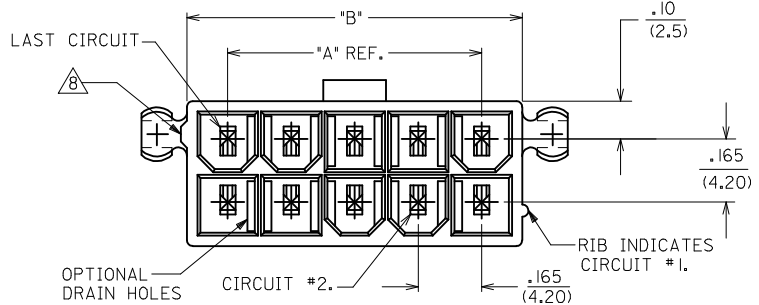
| | |
|-----------------|--------------|
| Old Part Number | A556616A2210 |
|-----------------|--------------|

Reference - Drawing Numbers

| | |
|-------------------------|-----------------|
| Packaging Specification | PK-5566-001 |
| Product Specification | PS-5556-001 |
| Sales Drawing | SDA-5566-N*2*-* |
| Test Summary | TS-5556-002 |

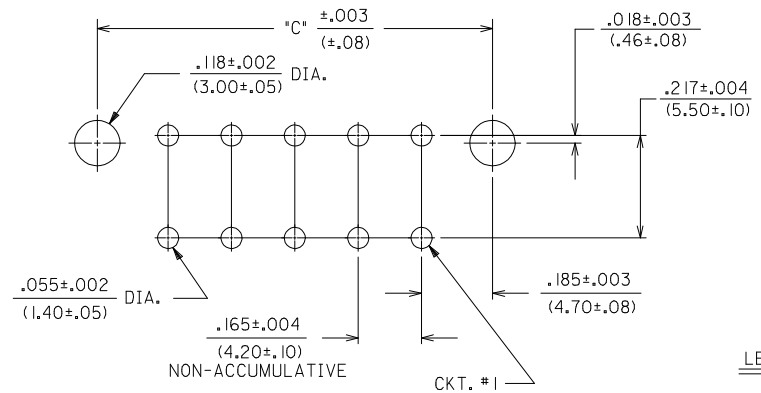
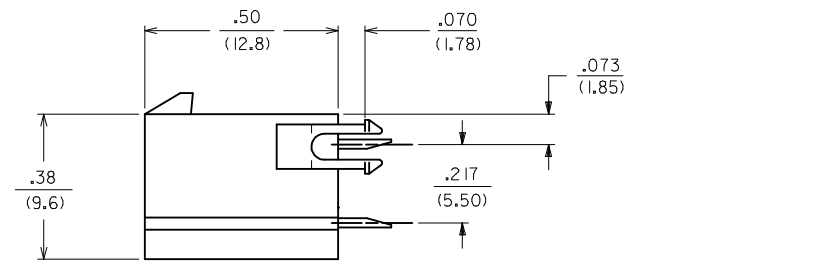
This document was generated on 05/21/2010

PLEASE CHECK WWW.MOLEX.COM FOR LATEST PART INFORMATION



NOTES:

- 1) HOUSING MATERIAL:
 - "BLANK" - NYLON 6/6, U.L. 94V-2, COLOR: NATURAL.
 - 210 - NYLON 6/6, U.L. 94V-0, COLOR: NATURAL.
 - BL - NYLON 6/6, U.L. 94V-2, COLOR: DYED BLACK.
- 2) TERMINAL MATERIAL: BRASS ALLOY 260
- 3) PART MATES WITH MINI-FIT JR. RECEPTACLE #5557.
- 4) PACKAGING: SEE CHARTS
- 5) MOUNTING OPTIONS:
 - "BLANK" - NO MOUNTING (SEE SD-5566-NA AND -NB SERIES DWGS.)
 - 2 - PEG MOUNT
- 6) TERMINAL PLATING:
 - "BLANK" - .000035/(.00090) MIN. TIN OVER .000020/(.00050) MIN. COPPER.
 - *GS - .000030/(.00076) MIN. SELECT GOLD .000100/(.00254) MIN. SELECT MATTE TIN OVER .000050/(.00127) MIN. NICKEL OVERALL.
 - *GS2 - .000015/(.00038) MIN. SELECT GOLD AND .000100/(.00254) MIN. SELECT MATTE TIN OVER .000050/(.00127) MIN. NICKEL OVERALL.
 - S - .000100/(.00254) MIN. TIN OVER .000050/(.00127) MIN. NICKEL.
- *THE PRIMARY SHIPPING CARTON WILL BE LABELED "COMPLIANT TO RoHS DIRECTIVE 2002/95/EC AND ELV ANNEX II OF DIRECTIVE 2000/53/EC."
- *CARTONS WITHOUT THIS LABEL MAY CONTAIN PRODUCT WITH TIN-LEAD PLATING.
- 7) PRODUCT SPECIFICATION AND PROCESSING PARAMETERS: SEE PS-5566-001
- 8) ANTI-SHINGLING RIB MAY OR MAY NOT APPEAR ON HOUSINGS.
- 9) CONNECTORS ARE NOT TO BE MATED OR UNMATED WHILE CIRCUITS ARE LIVE.
- 10) PARTS ARE NOT DESIGNED FOR CURRENT SHARING.

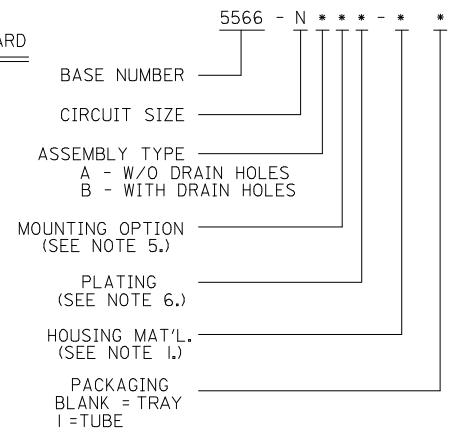


RECOMMENDED HOLE LAYOUT FOR .070/(1.78) MAX. THICK P. C. BOARD

VIEWED FROM COMPONENT SIDE

| CIRCUIT SIZE | DIM. "A" | DIM. "B" | DIM. "C" |
|--------------|-------------|-------------|---------------|
| 2 | — | .21 (5.4) | .370 (9.40) |
| 4 | .17 (4.2) | .38 (9.6) | .535 (13.60) |
| 6 | .33 (8.4) | .54 (13.8) | .701 (17.80) |
| 8 | .50 (12.6) | .71 (18.0) | .866 (22.00) |
| 10 | .66 (16.8) | .87 (22.2) | 1.031 (26.20) |
| 12 | .83 (21.0) | 1.04 (26.4) | 1.197 (30.40) |
| 14 | .99 (25.2) | 1.20 (30.6) | 1.362 (34.60) |
| 16 | 1.16 (29.4) | 1.37 (34.8) | 1.528 (38.80) |
| 18 | 1.32 (33.6) | 1.54 (39.0) | 1.693 (43.00) |
| 20 | 1.49 (37.8) | 1.70 (43.2) | 1.858 (47.20) |
| 22 | 1.65 (42.0) | 1.87 (47.4) | 2.024 (51.40) |
| 24 | 1.82 (46.2) | 2.03 (51.6) | 2.189 (55.60) |

LEGEND:

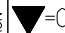
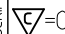



| | |
|-----------|----|
| 4 | R2 |
| 3 | R2 |
| 2 | R2 |
| 1 | R2 |
| SHT. REV. | |

| REVISED NOTES 8 EC NO: UCP2009-1336 DRAWN: JLOSTEMEIER 2008/11/24 CHKD: JBELM 2008/11/24 APPR: FSMITH 2008/11/24 | QUALITY SYMBOLS | GENERAL TOLERANCES (UNLESS SPECIFIED) | DIMENSION STYLE | SCALE | DESIGN UNITS | THIRD ANGLE PROJECTION | | | | | | | | | | | | | | | |
|--|--|--|-----------------|-------|--------------|--|------------|------|------------|-----|---------|------------|-------------|-------|-----------|------|---------|-------|---|--------|--|
| | $\nabla=0$ $\nabla=0$ | <table border="1"> <thead> <tr> <th></th> <th>mm</th> <th>INCH</th> </tr> </thead> <tbody> <tr> <td>4 PLACES ±</td> <td>---</td> <td>---</td> </tr> <tr> <td>3 PLACES ±</td> <td>---</td> <td>±.015</td> </tr> <tr> <td>2 PLACES ±</td> <td>0.38</td> <td>±.015</td> </tr> <tr> <td>1 PLACE ±</td> <td>0.38</td> <td>±---</td> </tr> </tbody> </table> | | mm | INCH | 4 PLACES ± | --- | --- | 3 PLACES ± | --- | ±.015 | 2 PLACES ± | 0.38 | ±.015 | 1 PLACE ± | 0.38 | ±--- | IN/MM | 1:1 | METRIC | |
| | | mm | INCH | | | | | | | | | | | | | | | | | | |
| | 4 PLACES ± | --- | --- | | | | | | | | | | | | | | | | | | |
| 3 PLACES ± | --- | ±.015 | | | | | | | | | | | | | | | | | | | |
| 2 PLACES ± | 0.38 | ±.015 | | | | | | | | | | | | | | | | | | | |
| 1 PLACE ± | 0.38 | ±--- | | | | | | | | | | | | | | | | | | | |
| <table border="1"> <tr> <td>DRAWN BY</td> <td>DATE</td> <td>TITLE</td> </tr> <tr> <td>RJF</td> <td>8/19/87</td> <td>MINI-FIT JR. VERTICAL HEADER ASSEMBLIES WITH MOUNTING PEGS</td> </tr> <tr> <td>CHECKED BY</td> <td>DATE</td> <td></td> </tr> <tr> <td>GT</td> <td>8/19/87</td> <td></td> </tr> <tr> <td>APPROVED BY</td> <td>DATE</td> <td></td> </tr> <tr> <td>RAS</td> <td>8/19/87</td> <td></td> </tr> </table> | DRAWN BY | DATE | TITLE | RJF | 8/19/87 | MINI-FIT JR. VERTICAL HEADER ASSEMBLIES WITH MOUNTING PEGS | CHECKED BY | DATE | | GT | 8/19/87 | | APPROVED BY | DATE | | RAS | 8/19/87 | | MATERIAL NO. SEE SHTS 2-4 DOCUMENT NO. SDA-5566-N*2*-* SHEET NO. 1 OF 4 | | |
| DRAWN BY | DATE | TITLE | | | | | | | | | | | | | | | | | | | |
| RJF | 8/19/87 | MINI-FIT JR. VERTICAL HEADER ASSEMBLIES WITH MOUNTING PEGS | | | | | | | | | | | | | | | | | | | |
| CHECKED BY | DATE | | | | | | | | | | | | | | | | | | | | |
| GT | 8/19/87 | | | | | | | | | | | | | | | | | | | | |
| APPROVED BY | DATE | | | | | | | | | | | | | | | | | | | | |
| RAS | 8/19/87 | | | | | | | | | | | | | | | | | | | | |
| R2 | DRAFT WHERE APPLICABLE MUST REMAIN WITHIN DIMENSIONS | THIS DRAWING CONTAINS INFORMATION THAT IS PROPRIETARY TO MOLEX INCORPORATED AND SHOULD NOT BE USED WITHOUT WRITTEN PERMISSION | | | | | | | | | | | | | | | | | | | |

| 13 | 12 | 11 | 10 | 9 | 8 | 7 | 6 | 5 | 4 | 3 | 2 | 1 | | | |
|----------------|------------|-------------------------|----|----------------|----------------|-------------------------|---|----------------|--------------|-------------------------|---|----------------|------------------|-------------------------|--|
| PLATING: | | 35 M.I. TIN | | PLATING: | | 35 M.I. TIN | | PLATING: | | 30 M.I. GOLD | | PLATING: | | 30 M.I. GOLD | |
| DRAIN HOLES: | | WITHOUT DRAIN HOLES | | DRAIN HOLES: | | WITHOUT DRAIN HOLES | | DRAIN HOLES: | | WITHOUT DRAIN HOLES | | DRAIN HOLES: | | WITHOUT DRAIN HOLES | |
| MTG. OPTION: | | WITH PEGS | | MTG. OPTION: | | WITH PEGS | | MTG. OPTION: | | WITH PEGS | | MTG. OPTION: | | WITH PEGS | |
| HOUSING MAT'L: | | NYLON 6/6 94V-2 NATURAL | | HOUSING MAT'L: | | NYLON 6/6 94V-0 NATURAL | | HOUSING MAT'L: | | NYLON 6/6 94V-2 NATURAL | | HOUSING MAT'L: | | NYLON 6/6 94V-0 NATURAL | |
| PACKAGING: | | TRAY | | PACKAGING: | | TRAY | | PACKAGING: | | TRAY | | PACKAGING: | | TRAY | |
| PART NO. | ENG NO. | CKTS | | PART NO. | ENG NO. | CKTS | | PART NO. | ENG NO. | CKTS | | PART NO. | ENG NO. | CKTS | |
| 39-29-9023 | 5566 -02A2 | 2 | | 39-29-9027 | 5566 -02A2-210 | 2 | | 39-29-9025 | 5566 -02A2GS | 2 | | 39-29-9029 | 5566 -02A2GS-210 | 2 | |
| 39-29-9043 | 5566 -04A2 | 4 | | 39-29-9047 | 5566 -04A2-210 | 4 | | 39-29-9045 | 5566 -04A2GS | 4 | | 39-29-9049 | 5566 -04A2GS-210 | 4 | |
| 39-29-9063 | 5566 -06A2 | 6 | | 39-29-9067 | 5566 -06A2-210 | 6 | | 39-29-9065 | 5566 -06A2GS | 6 | | 39-29-9069 | 5566 -06A2GS-210 | 6 | |
| 39-29-9083 | 5566 -08A2 | 8 | | 39-29-9087 | 5566 -08A2-210 | 8 | | 39-29-9085 | 5566 -08A2GS | 8 | | 39-29-9089 | 5566 -08A2GS-210 | 8 | |
| 39-29-9103 | 5566 -10A2 | 10 | | 39-29-9107 | 5566 -10A2-210 | 10 | | 39-29-9105 | 5566 -10A2GS | 10 | | 39-29-9109 | 5566 -10A2GS-210 | 10 | |
| 39-29-9123 | 5566 -12A2 | 12 | | 39-29-9127 | 5566 -12A2-210 | 12 | | 39-29-9125 | 5566 -12A2GS | 12 | | 39-29-9129 | 5566 -12A2GS-210 | 12 | |
| 39-29-9143 | 5566 -14A2 | 14 | | 39-29-9147 | 5566 -14A2-210 | 14 | | 39-29-9145 | 5566 -14A2GS | 14 | | 39-29-9149 | 5566 -14A2GS-210 | 14 | |
| 39-29-9163 | 5566 -16A2 | 16 | | 39-29-9167 | 5566 -16A2-210 | 16 | | 39-29-9165 | 5566 -16A2GS | 16 | | 39-29-9169 | 5566 -16A2GS-210 | 16 | |
| 39-29-9183 | 5566 -18A2 | 18 | | 39-29-9187 | 5566 -18A2-210 | 18 | | 39-29-9185 | 5566 -18A2GS | 18 | | 39-29-9189 | 5566 -18A2GS-210 | 18 | |
| 39-29-9203 | 5566 -20A2 | 20 | | 39-29-9207 | 5566 -20A2-210 | 20 | | 39-29-9205 | 5566 -20A2GS | 20 | | 39-29-9209 | 5566 -20A2GS-210 | 20 | |
| 39-29-9223 | 5566 -22A2 | 22 | | 39-29-9227 | 5566 -22A2-210 | 22 | | 39-29-9225 | 5566 -22A2GS | 22 | | 39-29-9229 | 5566 -22A2GS-210 | 22 | |
| 39-29-9243 | 5566 -24A2 | 24 | | 39-29-9247 | 5566 -24A2-210 | 24 | | 39-29-9245 | 5566 -24A2GS | 24 | | 39-29-9249 | 5566 -24A2GS-210 | 24 | |
| | - | | | | - | | | | - | | | | - | | |
| | - | | | | - | | | | - | | | | - | | |

| 13 | 12 | 11 | 10 | 9 | 8 | 7 | 6 | 5 | 4 | 3 | 2 | 1 | | | |
|----------------|------------|-------------------------|----|----------------|----------------|-------------------------|---|----------------|--------------|-------------------------|---|----------------|------------------|-------------------------|--|
| PLATING: | | 35 M.I. TIN | | PLATING: | | 35 M.I. TIN | | PLATING: | | 30 M.I. GOLD | | PLATING: | | 30 M.I. GOLD | |
| DRAIN HOLES: | | WITH DRAIN HOLES | | DRAIN HOLES: | | WITH DRAIN HOLES | | DRAIN HOLES: | | WITH DRAIN HOLES | | DRAIN HOLES: | | WITH DRAIN HOLES | |
| MTG. OPTION: | | WITH PEGS | | MTG. OPTION: | | WITH PEGS | | MTG. OPTION: | | WITH PEGS | | MTG. OPTION: | | WITH PEGS | |
| HOUSING MAT'L: | | NYLON 6/6 94V-2 NATURAL | | HOUSING MAT'L: | | NYLON 6/6 94V-0 NATURAL | | HOUSING MAT'L: | | NYLON 6/6 94V-2 NATURAL | | HOUSING MAT'L: | | NYLON 6/6 94V-0 NATURAL | |
| PACKAGING: | | TRAY | | PACKAGING: | | TRAY | | PACKAGING: | | TRAY | | PACKAGING: | | TRAY | |
| PART NO. | ENG NO. | CKTS | | PART NO. | ENG NO. | CKTS | | PART NO. | ENG NO. | CKTS | | PART NO. | ENG NO. | CKTS | |
| 39-29-9022 | 5566 -02B2 | 2 | | 39-29-9026 | 5566 -02B2-210 | 2 | | 39-29-9024 | 5566 -02B2GS | 2 | | 39-28-9028 | 5566 -02B2GS-210 | 2 | |
| 39-29-9042 | 5566 -04B2 | 4 | | 39-29-9046 | 5566 -04B2-210 | 4 | | 39-29-9044 | 5566 -04B2GS | 4 | | 39-28-9048 | 5566 -04B2GS-210 | 4 | |
| 39-29-9062 | 5566 -06B2 | 6 | | 39-29-9066 | 5566 -06B2-210 | 6 | | 39-29-9064 | 5566 -06B2GS | 6 | | 39-28-9068 | 5566 -06B2GS-210 | 6 | |
| 39-29-9082 | 5566 -08B2 | 8 | | 39-29-9086 | 5566 -08B2-210 | 8 | | 39-29-9084 | 5566 -08B2GS | 8 | | 39-28-9088 | 5566 -08B2GS-210 | 8 | |
| 39-29-9102 | 5566 -10B2 | 10 | | 39-29-9106 | 5566 -10B2-210 | 10 | | 39-29-9104 | 5566 -10B2GS | 10 | | 39-28-9108 | 5566 -10B2GS-210 | 10 | |
| 39-29-9122 | 5566 -12B2 | 12 | | 39-29-9126 | 5566 -12B2-210 | 12 | | 39-29-9124 | 5566 -12B2GS | 12 | | 39-28-9128 | 5566 -12B2GS-210 | 12 | |
| 39-29-9142 | 5566 -14B2 | 14 | | 39-29-9146 | 5566 -14B2-210 | 14 | | 39-29-9144 | 5566 -14B2GS | 14 | | 39-28-9148 | 5566 -14B2GS-210 | 14 | |
| 39-29-9162 | 5566 -16B2 | 16 | | 39-29-9166 | 5566 -16B2-210 | 16 | | 39-29-9164 | 5566 -16B2GS | 16 | | 39-28-9168 | 5566 -16B2GS-210 | 16 | |
| 39-29-9182 | 5566 -18B2 | 18 | | 39-29-9186 | 5566 -18B2-210 | 18 | | 39-29-9184 | 5566 -18B2GS | 18 | | 39-28-9188 | 5566 -18B2GS-210 | 18 | |
| 39-29-9202 | 5566 -20B2 | 20 | | 39-29-9206 | 5566 -20B2-210 | 20 | | 39-29-9204 | 5566 -20B2GS | 20 | | 39-28-9208 | 5566 -20B2GS-210 | 20 | |
| 39-29-9222 | 5566 -22B2 | 22 | | 39-29-9226 | 5566 -22B2-210 | 22 | | 39-29-9224 | 5566 -22B2GS | 22 | | 39-28-9228 | 5566 -22B2GS-210 | 22 | |
| 39-29-9242 | 5566 -24B2 | 24 | | 39-29-9246 | 5566 -24B2-210 | 24 | | 39-29-9244 | 5566 -24B2GS | 24 | | 39-28-9248 | 5566 -24B2GS-210 | 24 | |
| | - | | | | - | | | | - | | | | - | | |
| | - | | | | - | | | | - | | | | - | | |

| SEE SHEET 1 EC NO: UCP2009-1336 DRAWN: KLOSTEMEIER 2008/11/24 CHKD: JBEL 2008/11/24 APPR: FSMITH 2008/11/24 | DESCRIPTION REV | QUALITY SYMBOLS  = 0  = 0 | GENERAL TOLERANCES (UNLESS SPECIFIED) <table border="1"> <tr> <th></th> <th>mm</th> <th>INCH</th> </tr> <tr> <td>4 PLACES</td> <td>± .005</td> <td>± .0005</td> </tr> <tr> <td>3 PLACES</td> <td>± .015</td> <td>± .0015</td> </tr> <tr> <td>2 PLACES</td> <td>± .038</td> <td>± .015</td> </tr> <tr> <td>1 PLACE</td> <td>± .38</td> <td>± .015</td> </tr> </table> | | mm | INCH | 4 PLACES | ± .005 | ± .0005 | 3 PLACES | ± .015 | ± .0015 | 2 PLACES | ± .038 | ± .015 | 1 PLACE | ± .38 | ± .015 | DIMENSION STYLE IN/MM DRAWN BY: RJF DATE: 8/19/87 CHECKED BY: GT DATE: 8/19/87 APPROVED BY: RAS DATE: 8/19/87 | SCALE: 1:1 DESIGN UNITS: METRIC THIRD ANGLE PROJECTION | TITLE: MINI-FIT JR. VERT HEADER ASSEMBLIES WITH MOUNTING PEGS |  MOLEX INCORPORATED | MATERIAL NO.: SEE CHART DOCUMENT NO.: SDA-5566-N*2*-* SHEET NO.: 2 |
|--|--------------------|---|---|---------|----|------|----------|--------|---------|----------|--------|---------|----------|--------|--------|---------|-------|--------|--|--|---|---|--|
| | | | mm | INCH | | | | | | | | | | | | | | | | | | | |
| | | 4 PLACES | ± .005 | ± .0005 | | | | | | | | | | | | | | | | | | | |
| | | 3 PLACES | ± .015 | ± .0015 | | | | | | | | | | | | | | | | | | | |
| 2 PLACES | ± .038 | ± .015 | | | | | | | | | | | | | | | | | | | | | |
| 1 PLACE | ± .38 | ± .015 | | | | | | | | | | | | | | | | | | | | | |
| DRAFT WHERE APPLICABLE MUST REMAIN WITHIN DIMENSIONS | | | THIS DRAWING CONTAINS INFORMATION THAT IS PROPRIETARY TO MOLEX INCORPORATED AND SHOULD NOT BE USED WITHOUT WRITTEN PERMISSION | | | | | | | | | | | | | | | | | | | | |
| | | | | | | | | | | | | | | | | | | | | | | | |
| | | | | | | | | | | | | | | | | | | | | | | | |